



## TC-H366V Spec:4MP/25X/IW/E/A/2.8mm

6MP 25X Polar Day Panoramic AEW PTZ Camera

Pro Series



### KEY FEATURES

#### Panoramic Camera

- 1/1.8" CMOS
- Up to 3840x1568@30fps
- Horizontal:  $190^{\circ} \pm 10^{\circ}$ , Vertical:  $75^{\circ} \pm 10^{\circ}$
- Min. illumination Color: 0.0001Lux@F1.0

#### Detail Camera

- Auto-Tracking Early Warning (AEW)
- Up to 2560\*1440@30fps
- Optical zoom: 25x, digital zoom 16x
- Support 3D position
- IP66

## SPECIFICATIONS

Camera	
Image Sensor	Panorama:1/1.8"CMOS Detail:1/2.7"CMOS
Min. Illumination	Panorama:0.0001lux Detail:0.001Lux
Shutter Time	1s~1/100000s
Day&Night	Detail:IR-cut filter with auto switch (ICR)
Smart IR	Yes
WDR	Panorama:DWDR Detail:120dB
S/N	Panorama:42dB Detail:39dB
Lens	
Focal Length	Panorama:2.8mm Detail:4.8mm~120mm
Optical Zoom	25X
Digital Zoom	16X
Zoom Speed	<5s
Aperture Range	Panorama:F1.0 Detail:F1.67~F3.67
Aperture Type	Panorama:Fixed Detail:Auto(P-Iris)
Field of View	Panorama:190±10°(H) Detail:58°~2.8°(H); Panorama:75±10°(V) Detail:33.9°~1.7°(V); Panorama:N/A Detail:64.8°~3.3°(D)
Focus Control	Detail:Auto/Semi-auto/Manual
Close Focus Distance	Panorama:2000mm Detail:500mm~5000mm
DORI Distance	Panorama: Detect:45.5m Observe:18.1m Recognize:9.1m Identify:4.6m Detail: Detect:Detect:1980m Observe:785m Recognize:396m Identify:198m
Pan&Tilt	
Pan Range	0~360°
Pan Speed	Manual Speed:0.1°~200°/s Preset Speed:240°/s
Tilt Range	-16°~90° (Default -3°~90°)
Tilt Speed	Manual Speed:0.1°~120°/s Preset:180°/s
3D Position	Yes
Preset	500
Cruise	16,up to 32 presets per cruise
Scan	8
Pattern	8,each with 600s memory or 1000 orders
Scheduled Task	Preset,Cruise,Scan,Pattern
North Point	Yes(Manual setting)
Power-off Memory	Yes
Illuminator	
IR LEDs	Detail:10
IR Distance	Detail:150m
Wavelength	Detail:850nm
IR Irradiation Angle	Yes
White LEDs	Panorama:3 Detail:4
Whitelight Distance	Panorama:30m Detail:30m

Compression Standard	
Video Compression	S+265/H.265/H.264B/H.264M/H.264H/Motion JPEG
Video Bit Rate	32Kbps~16Mbps
Audio Compression	G.711A/G.711U/ADPCM_D/AAC_LC
Audio Sampling Rate	8KHz/32KHz/48KHz
Image	
Max. Resolution	Panorama:3840×1568@30fps Detail:2560×1440@30fps
Main Stream	Panorama: PAL:25fps(3840×1568,3632×1480) NTSC:30fps(3840×1568,3632×1480) Detail: PAL:25fps(2560×1440,2304×1296,1920×1080,1280×720) NTSC:30fps(2560×1440,2304×1296,1920×1080,1280×720)
Sub Stream	Panorama: PAL:25fps(1200×488,960×392) NTSC:30fps(1200×488,960×392) Detail: PAL:25fps(704×576,704×288,352×288,640×360) NTSC:30fps(704×480,704×240,352×240,640×360)
Third Stream	Detail: PAL:25fps(704×576,704×288,352×288,640×480) NTSC:30fps(704×480,704×240,352×240,640×480)
BLC	Yes
HLC	Yes
AGC	Yes
3DNR	Yes
White Balance	Auto/Semi-Auto/Manual/Sunshine/Nature Light/Warmlight Lamp/Daylight Lamp/Filament Lamp/Lock White Balance
ROI	Panorama:7 fixed rectangles and 1 dynamic tracking focus area for each main and secondary stream Detail:7 rectangular 3D fixed focus areas,supporting 1 rectangular dynamic tracking ROI
OSD	Panorama: 5 regions(Each region can have a maximum of 127 characters ,up to 5 lines) ,16*16/32*32/48*48/64*64/96*96/adaptable size Detail: 5 regions(Each region can have a maximum of 127 characters ,up to 5 lines),16*16/32*32/48*48/64*64/96*96/adaptable size; Vector/Lattice
Defog	Yes
Flip	Detail:Normal/Horizontal Mirror/Vertical Mirror/Inverted Flip
Regional Exposure	Detail:Yes
Regional Focus	Detail:Yes
Demist	Yes
Privacy Mask	Panorama:8 regions Detail:24 regions(Up to 4 blocks in the same scene)
Feature	
General Alarm	Panorama:Motion Detection Detail:Motion Detection; Panorama:Mask Alarm Detail:Mask Alarm; Alarm Input
Exceptions Alarm	Disk Full; Disk R/W Error; Recording Exception; IP Address Conflict; MAC Address Conflict; FTP Server Exception ; Network cable disc
Linkage Method	Send Email; Trigger Sound; Trigger Warmlight; Trigger Recording; Trigger Capture; Notify Surveillance Center; Alarm Output
Video Analytics	Panorama:Human/Vehicle Classification,Perimeter,Tripwire,Double Tripwire,Heatmap,Video Abnormal,Audio Abnormal Detail:Human/Vehicle Classification,Perimeter,Tripwire,Double Tripwire,Object Abandon,Object Missing,Loitering,Running,Parking,People Counting,Crowed Detection,Safety Helmet Detection,On Duty Detection,Video Abnormal,Audio Abnormal
Auto Early Warning(AEW)	Yes
Auto-Tracking	Yes
Face Mode	Detail:Face Capture
Face Capture Performance	Detect up to 32 faces at the same scene; Capture up to 16 faces at the same scene
Network	
ANR	Yes
Protocols	HTTP; HTTPS; TCP/IP; UDP; UPnP; ICMP; IGMP; SNMP v1\v2\v3; DHCP; DNS; DDNS; Easy DDNS; NTP; SMTP; TLS v1.2; SSL; 802.1x; QoS; IPv4; IPv6; PPPoE; SSH; Unicast; Multicast; ARP; RTP; SRTP; FTP; SFTP
System Compatibility	P2P; ONVIF(Profile S/T/G/M); SDK; CGI; Milestone; RTSP; RTMP
Remote Connection	≤7
User/Host	Up to 32 users. 4 user levels
Client	Easy7 VMS
Moblie Client	EasyLive Plus
Web	IE10+; Firefox52+; Edge89+; Safari11+; Chrome57+

Interface	
Communication Interface	1*RJ45 (10/100/1000Base-T)
Audio I/O	1*Input Impedance 1k $\Omega$ ,2.0~2.4Vp-p; 1*Output Impedance 600 $\Omega$
Alarm I/O	2*Switching; 1*Switching,Voltage $\leq$ DC24V,Current $\leq$ 1A
Built-in Speaker	1,4 $\Omega$ 4W
Reset Button	Yes
On-board Storage	Built-in Micro SD card slot,up to 512 GB
General	
Web Client Language	19 languages: Simplified Chinese/English/Traditional Chinese/Spanish/Italian/Korean/Turkish/Russian/Thai/Polish/French/Dutch/Hebrew/Vietnamese/Arabic/German/Ukrainian/Portuguese/Albanian
Operating Temperature	-30 $^{\circ}$ C~65 $^{\circ}$ C(-22 $^{\circ}$ F~149 $^{\circ}$ F)
Operating Humidity	$\leq$ 95%RH
Storage Temperature	-30 $^{\circ}$ C~65 $^{\circ}$ C(-22 $^{\circ}$ F~149 $^{\circ}$ F)
Storage Humidity	10%~95%RH (non-condensing)
Power Supply	AC24V $\pm$ 25%\DC24V $\pm$ 10%; PoE:IEEE 802.3bt
Power Consumption	29W(IR OFF) ; 55W(IR ON)
Protection	Surge4000V; ESD6000V; IP66
Material	Metal+plastic
Boundary Dimensions	298mm(D)*375mm(H)
Package Dimensions	385(L)350(W)540(H)mm
GrossWeight	9.41kg
NetWeight	5.33kg

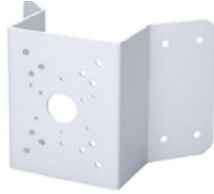
## Assembly diagram of Junction Box



**DF20Y**



**TC-P32EM**



**A35**



**DF21Y**



**A36**

## DIMENSIONS (Unit: mm)

